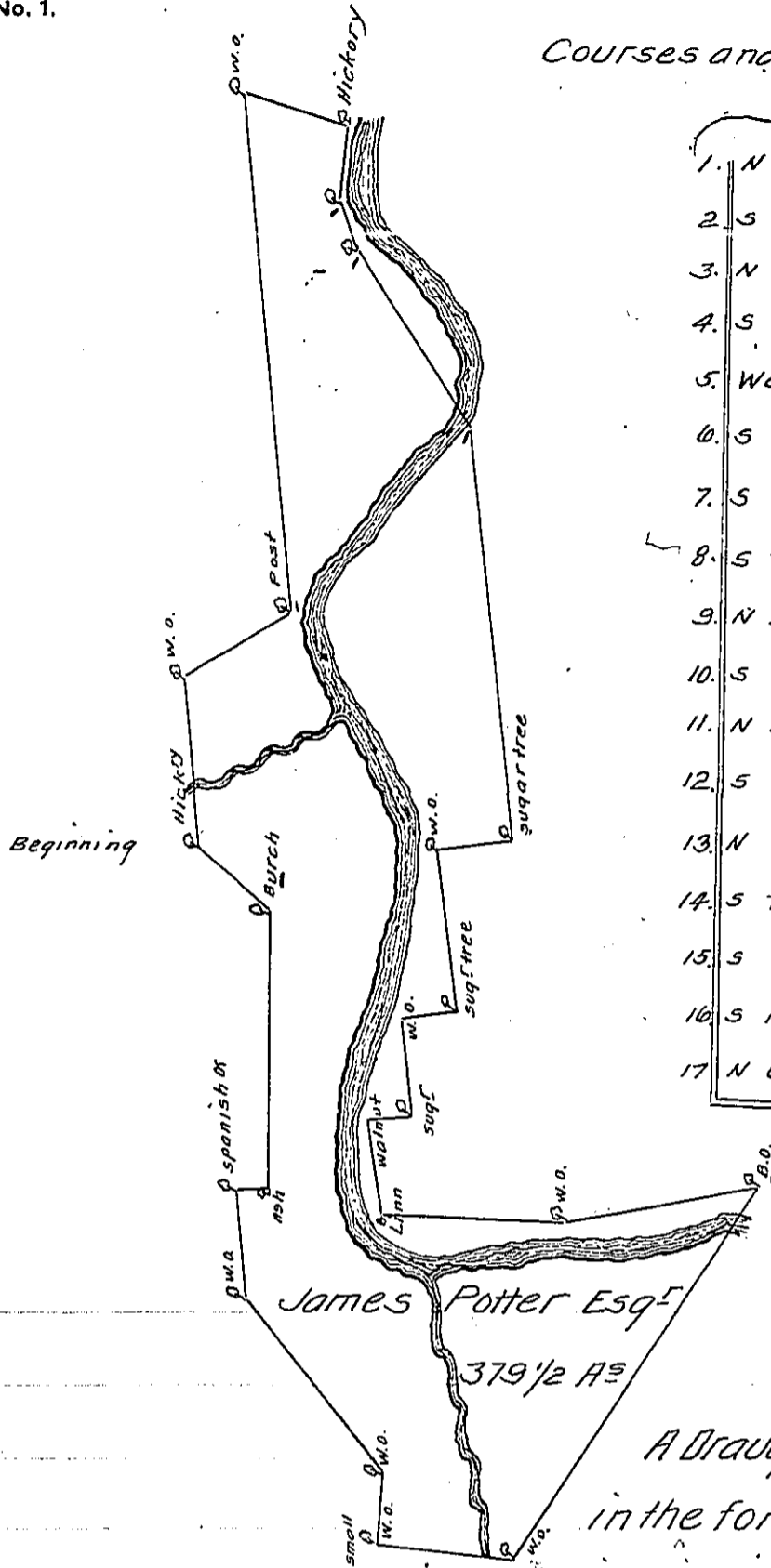


Courses and Distances from the Beginning



1. N 77° E. 78	18. North 60.
2. S 40 E. 60	19. East 32
3. N 78 E. 238	20. N 45 E 102
4. S 10 W 50	21. N 77 E 50
5. West... 34	22. S 13 E 14
6. S 61 W 22	23. N 84 E 126
7. S 51 W 94	24. N 29 E 36
8. S 77 W 190	
9. N 13 W 36	
10. S 77 W 74	
11. N 13 W 24	
12. S 77 W 44	
13. N 13 W 22	
14. S 77 W 42	
15. S 4 E 85	
16. S 17 E 90	
17. N 63 W 206	

A Draught of a tract of land situate in the forks of Sinemahonun including a place called the bigg Elk-lick in the County of Northumberland containing Three hundred and seventy nine Acres and an half and Allowance. Surveyed the 10th day of August 1785 for General James Potter in pursuance of a Warrant for 500 Acres (being part of a Pre-emption of 1000 Acres reserved for him by Law) Bearing Date at Philadelphia the 4th day of May Anno Domini 1785.

per.

Richard Sherer D.S.

To John Lukens Esquire
Surveyor General.

IN TESTIMONY that the above is a copy of the original remaining on file in the Department of Internal Affairs of Pennsylvania, made conformably to an Act of Assembly approved the 16th day of February, 1833, I have hereunto set my Hand and caused the Seal of said Department to be affixed at Harrisburg, this nineteenth day of October 1910.

Henry Horck
Secretary of Internal Affairs.